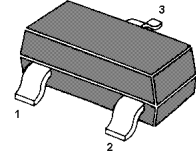


### PNP Silicon Epitaxial Planar Transistor

for switching and amplifier applications.  
Especially suitable for AF-driver stages  
and low power output stages.



1.Base 2.Emitter 3.Collector  
SOT-23 Plastic Package

The transistor is subdivided into two groups  
C And D according to its DC current gain.

#### Absolute Maximum Ratings ( $T_a = 25\text{ }^\circ\text{C}$ )

Parameter	Symbol	Value	Unit
Collector Base Voltage	$-V_{CBO}$	40	V
Collector Emitter Voltage	$-V_{CEO}$	25	V
Emitter Base Voltage	$-V_{EBO}$	6	V
Collector Current	$-I_C$	2	A
Power Dissipation	$P_{tot}$	350	mW
Junction Temperature	$T_j$	150	$^\circ\text{C}$
Storage Temperature Range	$T_s$	- 55 to + 150	$^\circ\text{C}$

#### Characteristics at $T_a = 25\text{ }^\circ\text{C}$

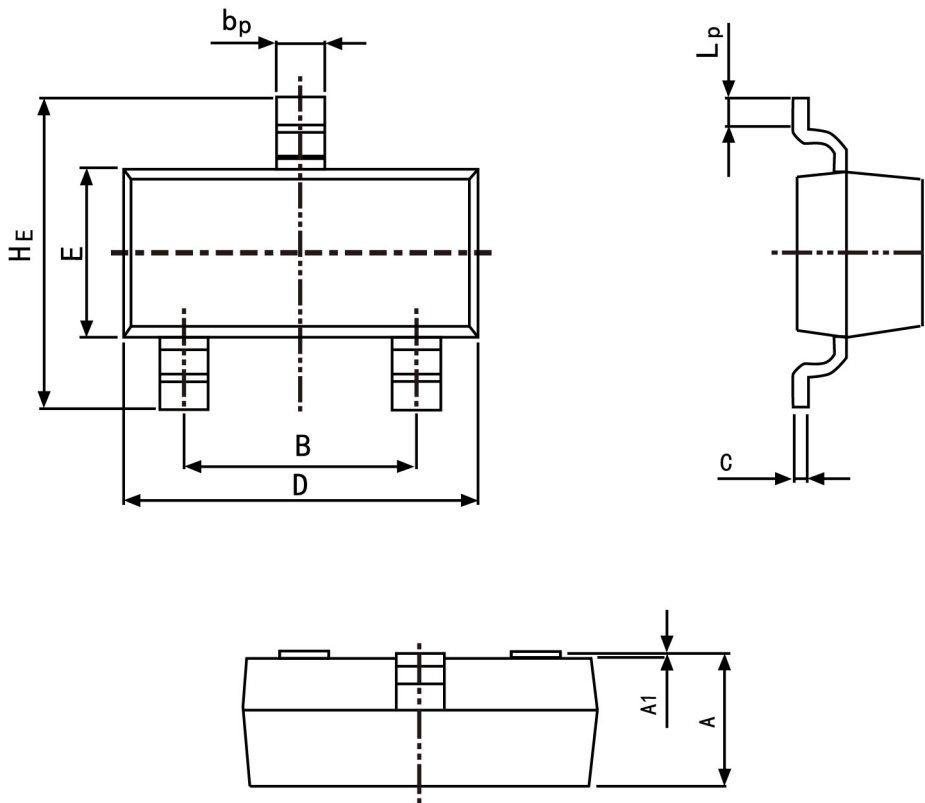
Parameter	Symbol	Min.	Max.	Unit
DC Current Gain at $-V_{CE} = 1\text{ V}$ , $-I_C = 5\text{ mA}$ at $-V_{CE} = 1\text{ V}$ , $-I_C = 100\text{ mA}$ at $-V_{CE} = 1\text{ V}$ , $-I_C = 1.5\text{ A}$	$h_{FE}$	45	-	-
	$h_{FE}$	100	250	-
	$h_{FE}$	160	300	-
	$h_{FE}$	40	-	-
Collector Base Cutoff Current at $-V_{CB} = 35\text{ V}$	$-I_{CBO}$	-	100	nA
Emitter Base Cutoff Current at $-V_{EB} = 6\text{ V}$	$-I_{EBO}$	-	100	nA
Collector Base Breakdown Voltage at $-I_C = 100\text{ }\mu\text{A}$	$-V_{(BR)CBO}$	40	-	V
Collector Emitter Breakdown Voltage at $-I_C = 2\text{ mA}$	$-V_{(BR)CEO}$	25	-	V
Emitter Base Breakdown Voltage at $-I_E = 100\text{ }\mu\text{A}$	$-V_{(BR)EBO}$	6	-	V
Collector Emitter Saturation Voltage at $-I_C = 1.5\text{ A}$ , $-I_B = 100\text{ mA}$	$-V_{CE(sat)}$	-	0.5	V
Base Emitter Saturation Voltage at $-I_C = 1.5\text{ A}$ , $-I_B = 100\text{ mA}$	$-V_{BE(sat)}$	-	1.2	V
Base Emitter Voltage at $-V_{CE} = 1\text{ V}$ , $-I_C = 10\text{ mA}$	$-V_{BE(on)}$	-	1	V
Transition Frequency at $-V_{CE} = 10\text{ V}$ , $-I_C = 50\text{ mA}$	$f_T$	100	-	MHz



PACKAGE OUTLINE

Plastic surface mounted package; 3 leads

SOT-23



Symbol	Dimension in Millimeters	
	Min	Max
A	0.95	1.40
B	1.78	2.04
bp	0.35	0.50
C	0.08	0.19
D	2.70	3.10
E	1.20	1.65
HE	2.20	3.00
A1	0.100	0.013
Lp	0.20	0.50